



Lichtwellenleiter Verbindungen

Fiber Optic Connections

2016/2017  



Glasfaser Patchkabel OM4 & OM3

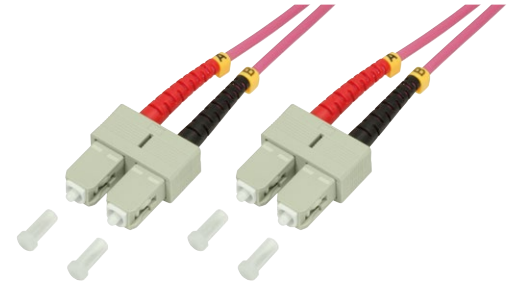
Fiber Patch Cord OM4 & OM3

Glasfaser Patchkabel OM4 50/125µ

- Duplex Patchkabel 50/125µ Multimode
- UPC, 850 nm, 25/0,25 dB
- Faser: I-VH 2G, 50/125µ, OM4
- Mantel: LSZH, erikaviolett, 3,0 mm Ø
- Anwendung: Bis 40 Gbit/s / 125 m
- Standard: DIN EN 50173-1 und IEC/ISO 11801
- Qualität: Jedes Kabel ist mit einem Prüfprotokoll versehen

Fiber Patch Cord OM4 50/125µ

- Duplex Jumper 50/125µ Multimode
- UPC, 850 nm, 25/0,25 dB
- Faser: I-VH 2G, 50/125µ, OM4
- Jacket: LSZH, erika violett, 3,0 mm Ø
- Application: Up to 40 Gbit/s / 125 m
- Standard: DIN EN 50173-1 and IEC/ISO 11801
- Quality: Each cable includes a measure protocol



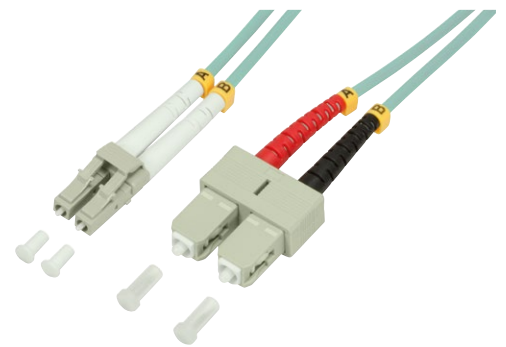
Länge / Length	LC-LC	SC-SC	LC-SC	LC-ST	ST-ST
0.50 m	FP4LC00	FP4SC00	FP4LS00	FP4LT00	FP4ST00
1.00 m	FP4LC01	FP4SC01	FP4LS01	FP4LT01	FP4ST01
2.00 m	FP4LC02	FP4SC02	FP4LS02	FP4LT02	FP4ST02
3.00 m	FP4LC03	FP4SC03	FP4LS03	FP4LT03	FP4ST03
5.00 m	FP4LC05	FP4SC05	FP4LS05	FP4LT05	FP4ST05
7.50 m	FP4LC07	FP4SC07	FP4LS07	FP4LT07	FP4ST07
10.00 m	FP4LC10	FP4SC10	FP4LS10	FP4LT10	FP4ST10
15.00 m	FP4LC15	FP4SC15	FP4LS15	FP4LT15	FP4ST15
20.00 m	FP4LC20	FP4SC20	FP4LS20	FP4LT20	FP4ST20
30.00 m	FP4LC30				
40.00 m	FP4LC40				
50.00 m	FP4LC50				

Glasfaser Patchkabel OM3 50/125µ

- Duplex Patchkabel 50/125µ Multimode
- UPC, 850 nm, 25/0,25 dB
- Faser: I-VH 2G 50/125µ OM3
- Mantel: LSZH, Aqua, 3,0 mm Ø
- Anwendung: Bis 10 Gbit/s / 500 m
- Standard: DIN EN 50173-1 und IEC/ISO 11801
- Qualität: Jedes Kabel ist mit einem Prüfprotokoll versehen

Fiber Patch Cord OM3 50/125µ

- Duplex Jumper 50/125µ Multimode
- UPC, 850 nm, 25/0,25 dB
- Faser: I-VH 2G 50/125µ OM3
- Jacket: LSZH, aqua, 3,0 mm Ø
- Application: Up to 10 Gbps / 500 m
- Standard: DIN EN 50173-1 and IEC/ISO 11801
- Quality: Each cable includes a measure protocol



Länge / Length	LC-LC	SC-SC	ST-ST	LC-SC	LC-ST	ST-SC
0.50 m	FP3LC00	FP3SC00	FP3ST00	FP3LS00	FP3LT00	FP3SS00
1.00 m	FP3LC01	FP3SC01	FP3ST01	FP3LS01	FP3LT01	FP3SS01
2.00 m	FP3LC02	FP3SC02	FP3ST02	FP3LS02	FP3LT02	FP3SS02
3.00 m	FP3LC03	FP3SC03	FP3ST03	FP3LS03	FP3LT03	FP3SS03
5.00 m	FP3LC05	FP3SC05	FP3ST05	FP3LS05	FP3LT05	FP3SS05
7.50 m	FP3LC07	FP3SC07	FP3ST07	FP3LS07	FP3LT07	FP3SS07
10.00 m	FP3LC10	FP3SC10	FP3ST10	FP3LS10	FP3LT10	FP3SS10
15.00 m	FP3LC15	FP3SC15	FP3ST15	FP3LS15	FP3LT15	FP3SS15
20.00 m	FP3LC20	FP3SC20	FP3ST20	FP3LS20	FP3LT20	FP3SS20
30.00 m	FP3LC30					
40.00 m	FP3LC40					
50.00 m	FP3LC50					

Glasfaser Patchkabel OM2 & OM1

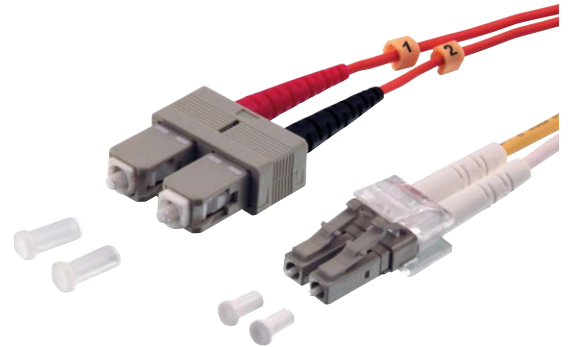
Fiber Patch Cord OM2 & OM1

Glasfaser Patchkabel OM2 50/125µ

- Duplex Patchkabel 50/125µ Multimode
- UPC, 850 nm, 25/0,25 dB
- Faser: I-VH 2G 50/125µ OM2
- Mantel: LSZH, orange, 3,0 mm Ø
- Anwendung: Bis 1 Gbit/s / 500 m
- Standard: DIN EN 50173-1 und IEC/ISO 11801
- Qualität: Jedes Kabel ist mit einem Prüfprotokoll versehen

Fiber Patch Cord OM2 50/125µ

- Duplex Jumper 50/125µ Multimode
- UPC, 850 nm, 25/0,25 dB
- Faser: I-VH 2G 50/125µ OM2
- Jacket: LSZH, orange, 3,0 mm Ø
- Application: Up to 1 Gbps / 500 m
- Standard: DIN EN 50173-1 and IEC/ISO 11801
- Quality: Each cable includes a measure protocol



Länge / Length	LC-LC	SC-SC	ST-ST	LC-SC	LC-ST	ST-SC
0.50 m	FP2LC00	FP2SC00	FP2ST00	FP2LS00	FP2LT00	FP2SS00
1.00 m	FP2LC01	FP2SC01	FP2ST01	FP2LS01	FP2LT01	FP2SS01
2.00 m	FP2LC02	FP2SC02	FP2ST02	FP2LS02	FP2LT02	FP2SS02
3.00 m	FP2LC03	FP2SC03	FP2ST03	FP2LS03	FP2LT03	FP2SS03
5.00 m	FP2LC05	FP2SC05	FP2ST05	FP2LS05	FP2LT05	FP2SS05
7.50 m	FP2LC07	FP2SC07	FP2ST07	FP2LS07	FP2LT07	FP2SS07
10.00 m	FP2LC10	FP2SC10	FP2ST10	FP2LS10	FP2LT10	FP2SS10
15.00 m	FP2LC15	FP2SC15	FP2ST15	FP2LS15	FP2LT15	FP2SS15
20.00 m	FP2LC20	FP2SC20	FP2ST20	FP2LS20	FP2LT20	FP2SS20
30.00 m	FP2LC30	30.00 m	FP3LC30			
40.00 m	FP2LC40	40.00 m	FP3LC40			
50.00 m	FP2LC50	50.00 m	FP3LC50			

Glasfaser Patchkabel OM1 62,5/125µ

- Duplex Patchkabel 62,5/125µ Multimode
- UPC, 850 nm, 25/0,25 dB
- Faser: I-VH 2G 62,5/125µ OM1
- Mantel: LSZH, orange, 3,0 mm Ø
- Anwendung: Bis 1 Gbit/s / 300 m
- Standard: DIN EN 50173-1 und IEC/ISO 11801
- Qualität: Jedes Kabel ist mit einem Prüfprotokoll versehen

Fiber Patch Cord OM1 62.5/125µ

- Duplex Jumper 62.5/125µ Multimode
- UPC, 850 nm, 25/0,25 dB
- Faser: I-VH 2G 62.5/125µ OM1
- Jacket: LSZH, orange, 3,0 mm Ø
- Application: Up to 1 Gbps / 300 m
- Standard: DIN EN 50173-1 and IEC/ISO 11801
- Quality: Each cable includes a measure protocol



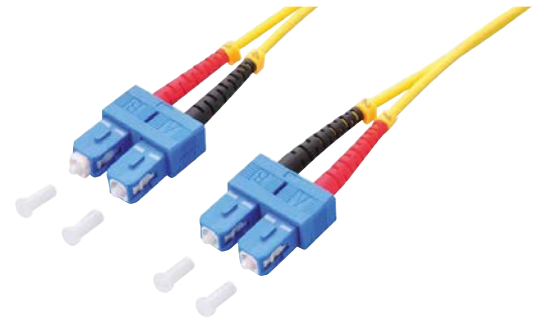
Länge / Length	LC-LC	SC-SC	ST-ST	LC-SC	LC-ST	ST-SC
0.50 m	FP1LC00	FP1SC00	FP1ST00	FP1LS00	FP1LT00	FP1SS00
1.00 m	FP1LC01	FP1SC01	FP1ST01	FP1LS01	FP1LT01	FP1SS01
2.00 m	FP1LC02	FP1SC02	FP1ST02	FP1LS02	FP1LT02	FP1SS02
3.00 m	FP1LC03	FP1SC03	FP1ST03	FP1LS03	FP1LT03	FP1SS03
5.00 m	FP1LC05	FP1SC05	FP1ST05	FP1LS05	FP1LT05	FP1SS05
7.50 m	FP1LC07	FP1SC07	FP1ST07	FP1LS07	FP1LT07	FP1SS07
10.00 m	FP1LC10	FP1SC10	FP1ST10	FP1LS10	FP1LT10	FP1SS10
15.00 m	FP1LC15					
20.00 m	FP1LC20					

Glasfaser Patchkabel OS2 9/125 μ

- Duplex Patchkabel 9/125 μ Singlemode
- UPC, 1550 nm, 50/0,25 dB
- Faser: I-VH 2G, 9/125 μ , OS1/2
- Mantel: LSZH, gelb, 3,0 mm \varnothing
- Anwendung: Bis 100 Gbit/s / 40 km
- Standard: DIN EN 50173-1 und IEC/ISO 11801
- Qualität: Jedes Kabel ist mit einem Prüfprotokoll versehen

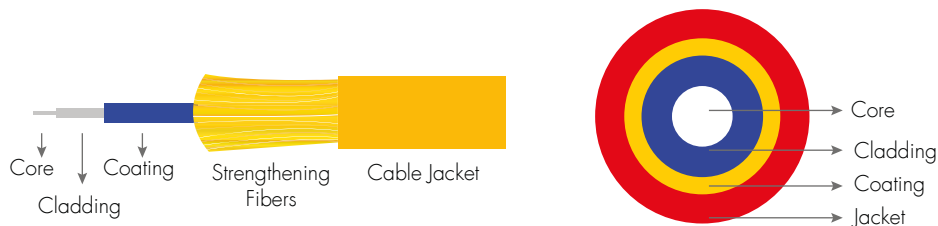
Fiber Patch Cord OS2 9/125 μ

- Duplex Jumper 9/125 μ Singlemode
- UPC, 1550 nm, 50/0.25 dB
- Fiber: I-VH 2G, 9/125 μ , OS1/2
- Jacket: LSZH, yellow, 3.0 mm \varnothing
- Application: Up to 100 Gbps / 40 km
- Standard: DIN EN 50173-1 and IEC/ISO 11801
- Quality: Each cable includes a measure protocol



Länge / Length	LC-LC	SC-SC	LC-SC	LC-ST	ST-SC
0.50 m	FP0LC00	FPOSC00	FPOLS00	FPOLT00	FPOSS00
1.00 m	FP0LC01	FPOSC01	FPOLS01	FPOLT01	FPOSS01
2.00 m	FP0LC02	FPOSC02	FPOLS02	FPOLT02	FPOSS02
3.00 m	FP0LC03	FPOSC03	FPOLS03	FPOLT03	FPOSS03
5.00 m	FP0LC05	FPOSC05	FPOLS05	FPOLT05	FPOSS05
7.50 m	FP0LC07	FPOSC07	FPOLS07	FPOLT07	FPOSS07
10.00 m	FP0LC10	FPOSC10	FPOLS10	FPOLT10	FPOSS10
15.00 m	FP0LC15	FPOSC15	FPOLS15	FPOLT15	FPOSS15
20.00 m	FP0LC20	FPOSC20	FPOLS20	FPOLT20	FPOSS20

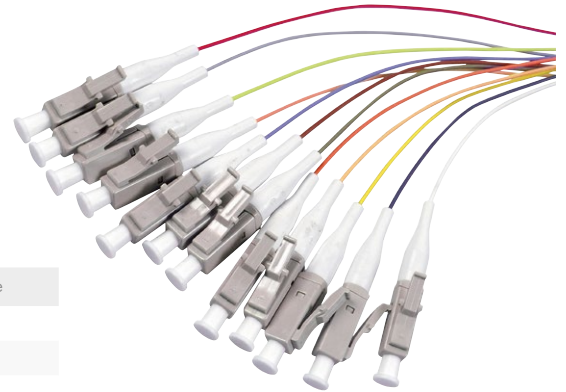
Aufbau von Lichtwellenleitern Structure of optical fibers



	Multimode				Singlemode	
	OM1	OM2	OM3	OM4	OS1 / OS2	
Kerndurchmesser (μm) Core diameter (μm)	62.5	50	50	50	9	
Manteldurchmesser (μm) Cladding diameter (μm)	125	125	125	125	125	
Wellenlänge (μm) Wave length (μm)	850 / 1310	850 / 1310	850 / 1310	850 / 1310	1310 / 1550	
Max. Dämpfung (dB/km) Splice Loss (dB/km)	2.9 / 0.7	2.4 / 0.7	2.5 / 0.7	2.4 / 0.6	0.34 / 0.19	
Max. Übertragung Max. Transmission	1 Gbps 10 Gbps	300 m / 500 m 30 m / 220 m	500 m / 500 m 80 m / 220 m	1000 m / 500 m 300 m / 220 m	1000 m / 500 m 500 m / 220 m	10 km / 50 km 10 km / 40 km

Farbiger Pigtaillsatz 12x LC, 2m

- 12x Pigtaills mit LC-Steckverbinder, je 2m
- Leicht abziehbar bis 1m
- Mit gefärbten Fasercoatings 900 μ in rot, grün, blau, gelb, weiß, grau, braun, violett, türkis, schwarz, orange, pink
- LSZH: Flammwidrig und halogenfrei
- Standard: DIN EN 50173-1 und IEC/ISO 11801
- Jedes Kabel ist mit einem Prüfprotokoll versehen



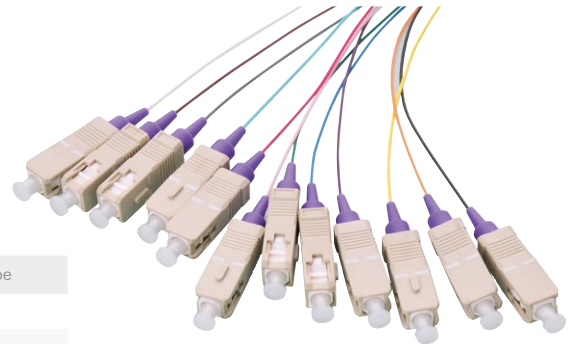
Colored Pigtail Set 12x LC, 2m

- 12x Pigtaills with LC-Connector, 2m
- Easy strip type till 1m
- With colored 900 μ fiber: red, green, blue, yellow, white, grey, brown, violet, aqua, black, orange, pink
- LSZH, low smoke zero halogen
- Standard: DIN EN 50173-1 and IEC/ISO 11801
- Each cable includes a measure protocol

Hst.Nr. / Part no.	Typ / Type
FL4LC02	OM4
FL3LC02	OM3
FL2LC02	OM2
FL0LC02	OS2

Farbiger Pigtaillsatz 12x SC, 2m

- 12x Pigtaills mit SC-Steckverbinder, je 2m
- Leicht abziehbar bis 1m
- Mit gefärbten Fasercoatings 900 μ in rot, grün, blau, gelb, weiß, grau, braun, violett, türkis, schwarz, orange, pink
- LSZH: Flammwidrig und halogenfrei
- Standard: DIN EN 50173-1 und IEC/ISO 11801
- Jedes Kabel ist mit einem Prüfprotokoll versehen



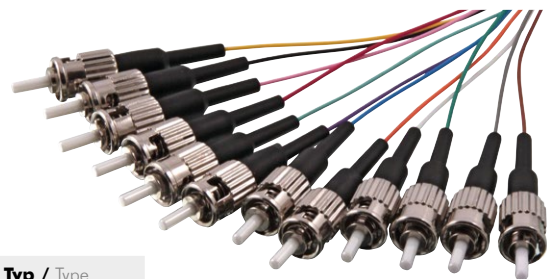
Colored Pigtail Set 12x SC, 2m

- 12x Pigtaills with SC-Connector, 2m
- Easy strip type till 1m
- With colored 900 μ fiber: red, green, blue, yellow, white, grey, brown, violet, aqua, black, orange, pink
- LSZH, low smoke zero halogen
- Standard: DIN EN 50173-1 and IEC/ISO 11801
- Each cable includes a measure protocol

Hst.Nr. / Part no.	Typ / Type
FL4SC02	OM4
FL3SC02	OM3
FL2SC02	OM2
FL0SC02	OS2

Farbiger Pigtaillsatz 12x ST, 2m

- 12x Pigtaills mit ST-Steckverbinder, je 2m
- Leicht abziehbar bis 1m
- Mit gefärbten Fasercoatings 900 μ in rot, grün, blau, gelb, weiß, grau, braun, violett, türkis, schwarz, orange, pink
- LSZH: Flammwidrig und halogenfrei
- Standard: DIN EN 50173-1 und IEC/ISO 11801
- Jedes Kabel ist mit einem Prüfprotokoll versehen



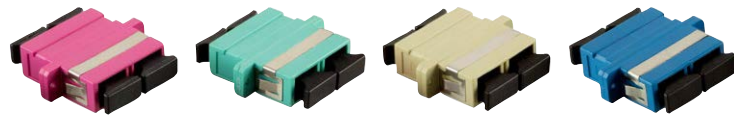
Colored Pigtail Set 12x ST, 2m

- 12x Pigtaills with ST-Connector, 2m
- Easy strip type till 1m
- With colored 900 μ fiber: red, green, blue, yellow, white, grey, brown, violet, aqua, black, orange, pink
- LSZH, low smoke zero halogen
- Standard: DIN EN 50173-1 and IEC/ISO 11801
- Each cable includes a measure protocol

Hst.Nr. / Part no.	Typ / Type
FL4ST02	OM4
FL3ST02	OM3
FL2ST02	OM2
FL0ST02	OS2

Glasfaser SC/SC Duplex Kupplung, Multi-/Singlemode

- LWL Kupplung SC Duplex Multi-/Singlemode
- Kunststoffgehäuse mit Flansch
- Mit Keramik-Hülse



Typ Type	Farbe Color	Hst.Nr. Part no.
OM4, Multimode	Violett / Violet	FA01SC4
OM3, Multimode	Türkis / Aqua	FA01SC3
OM1/2, Multimode	Beige / Beige	FA01SC2
OM1/2, Singlemode	Blau / Blue	FA01SC1

Fiber Optic SC/SC Duplex Adaptor, Multi-/Singlemode

- Fiber Adapter SC Duplex Multi-/Singlemode
- Plastic housing with flange
- With ceramic sleeve

Glasfaser LC/LC Duplex Kupplung, Multi-/Singlemode

- LWL Kupplung LC Duplex Multi-/Singlemode
- Kunststoffgehäuse mit Flansch
- Mit Keramik-Hülse



Typ Type	Farbe Color	Hst.Nr. Part no.
OM4, Multimode	Violett / Violet	FA02LC4
OM3, Multimode	Türkis / Aqua	FA02LC3
OM1/2, Multimode	Beige / Beige	FA02LC2
OM1/2, Singlemode	Blau / Blue	FA02LC1

Fiber Optic LC/LC Duplex Adaptor, Multi-/Singlemode

- Fiber Adapter LC Duplex Multi-/Singlemode
- Plastic housing with flange
- With ceramic sleeve

Glasfaser LC/LC Quad Kupplung, Multimode

- LWL Kupplung LC Quad Multi Mode
- Kunststoffgehäuse mit Flansch
- Mit Keramik-Hülse
- SC Duplex Einbaumaß



Farbe Color	Hst.Nr. Part no.
Violett / Violet	FA04LC4
Türkis / Aqua	FA04LC3
Beige / Beige	FA04LC2

Fiber Optic LC/LC Quad Adaptor, Multimode

- Fiber Adapter LC Quad Multimode
- Plastic housing with flange
- With ceramic sleeve
- SC Duplex foot print



19" Spleissbox ausziehbar, 1HE, Leergehäuse ohne Frontblende

- Ausziehbares Stahlgehäuse 483 x 44,5 x 244 mm
- Geeignet für bis zu 24 Ports, z.B. LC-Duplex oder SC-Simplex
- Modulares Design, ohne Frontblende, Pigtails oder Adapter
- Platzsparende einfache Installation im 19" Verteiler
- Geeignet für vorkonfektionierte Kabel oder Vorort-Montage
- Befestigungsmaterial, PG-Verschraubungen und Kabelbinder im Lieferumfang



19" Fiber Optic Enclosure 1U, Sliding Type, empty, without front panel

- Sliding type steel housing, 483 x 44.5 x 244 mm
- Capacity up to 24 Ports for LC Duplex or SC Simplex
- Modular design, without front panel, pigtails or adapters
- Quick-mount feature allows easy installation
- Suitable for field-termination and fusion splicing with pigtails
- M6 fixing set, cable ties and cable glands included

Farbe Color	Hst.Nr. Part no.
lichtgrau / light grey	FB0001G
schwarz / black	FB0001B

Frontblende 24 LC-Duplex o. SC-Simplex für 19" Spleissbox

- Ports: 24x LC-Duplex
- Material: Stahlblech, 1 mm
- Abmessung: 433 x 44 x 11 mm



Front Panel 24x LC-Duplex or SC-Simplex for 19" Fiber Optic Enclosure

- Ports: 24x LC-Duplex
- Material: Steel, 1 mm
- Dimension: 433 x 44 x 11 mm

Farbe Color	Hst.Nr. Part no.
lichtgrau / light grey	FB2401G
schwarz / black	FB2401B

Frontblende 24x SC-Duplex o. LC-Quad für 19" Spleissbox

- Ports: 24x LC-Duplex
- Material: Stahlblech, 1 mm
- Abmessung: 433 x 44 x 11 mm

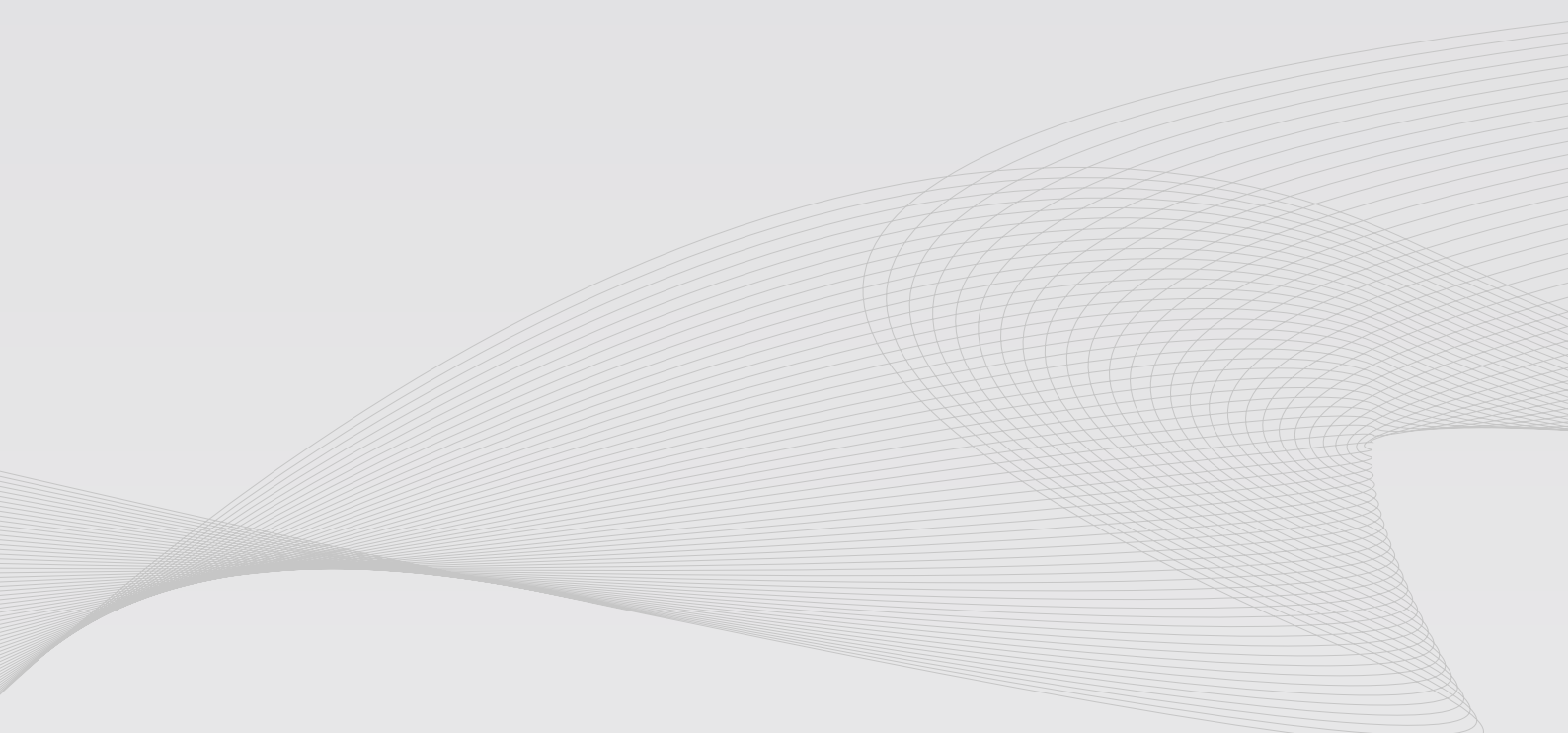


Front Panel 24x SC-Duplex or LC-Quad for 19" Fiber Optic Enclosure

- Ports: 24x LC-Duplex
- Material: Steel, 1 mm
- Dimension: 433 x 44 x 11 mm

Farbe Color	Hst.Nr. Part no.
lichtgrau / light grey	FB2402G
schwarz / black	FB2402B





2direct GmbH
Langenstück 5
D-58579 Schalksmühle
+49-2351-66887-0
www.logilink.de